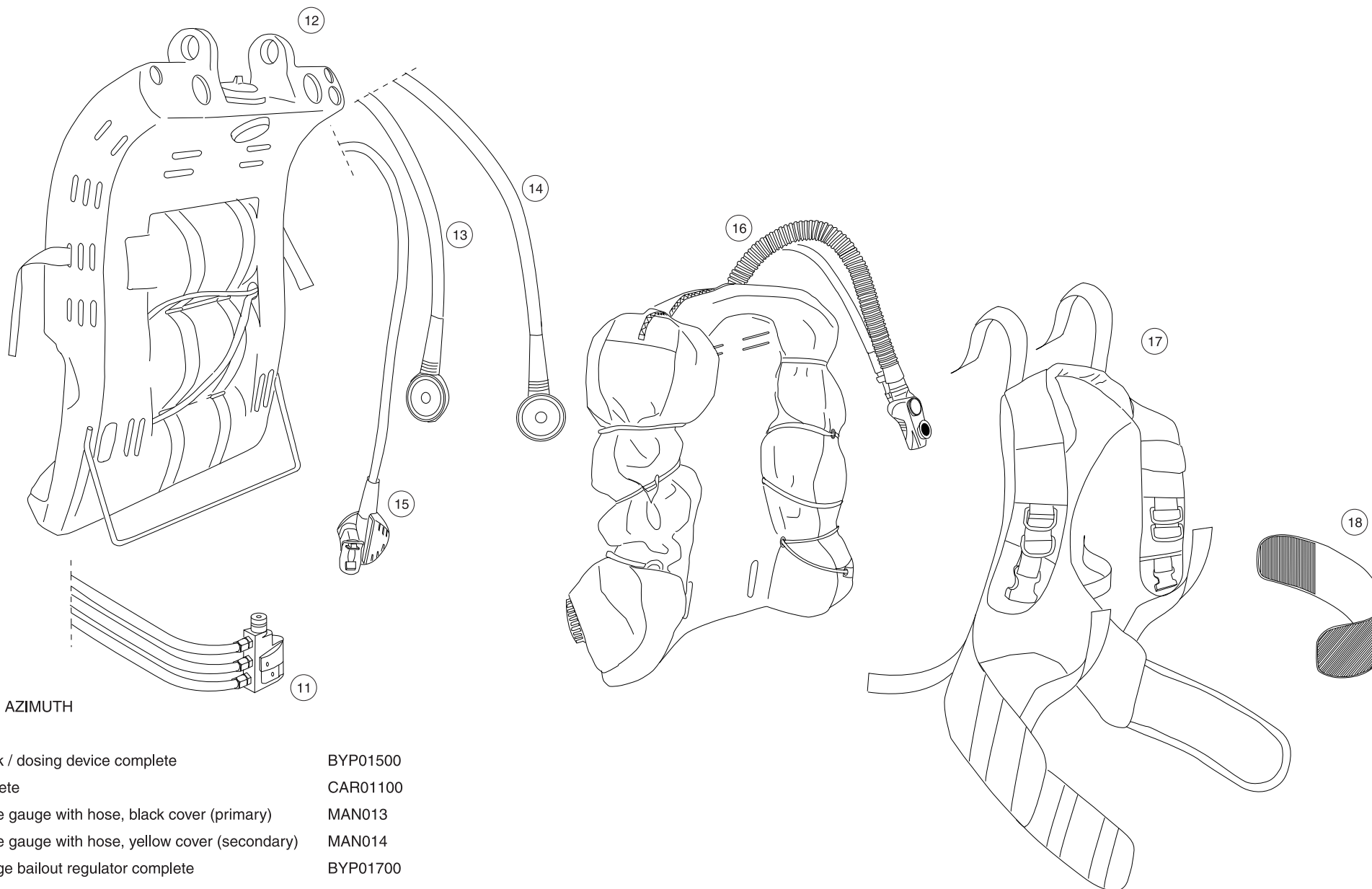


REBREATHER AZIMUTH

- | | |
|--|----------|
| 1) Inhalation corrugated hose (right) complete | TUC01300 |
| 2) Four ways mouthblock complete | VAL01300 |
| 3) Exhalation corrugated hose (left) complete | TUC01400 |
| 4) Exhalation counterlung (left) complete | POL01500 |
| 5) Exhaust valve complete | OPV01000 |
| 6) Scrubber canister complete | FIL01300 |
| 7) Inhalation counterlung (right) complete | POL01400 |
| 8) Steel cylinder 4 lt with valve | BOM01200 |
| 9) Pressure reducer complete (primary cylinder) | BYP01600 |
| 10) Pressure reducer complete (secondary cylinder) | BYP02200 |
| 11) Switch block / dosing device complete | BYP01500 |
| 12) Shell complete | CAR01100 |



REBREATHER AZIMUTH

- | | |
|---|-----------|
| 11) Switch block / dosing device complete | BYP01500 |
| 12) Shell complete | CAR01100 |
| 13) HP pressure gauge with hose, black cover (primary) | MAN013 |
| 14) HP pressure gauge with hose, yellow cover (secondary) | MAN014 |
| 15) Second stage bailout regulator complete | BYP01700 |
| 16) BC jacket complete | JSU-BC-01 |
| 17) Harness complete | JSU-I-01 |
| 18) Extension cummerbund size XL/XXXL | CIN04400 |